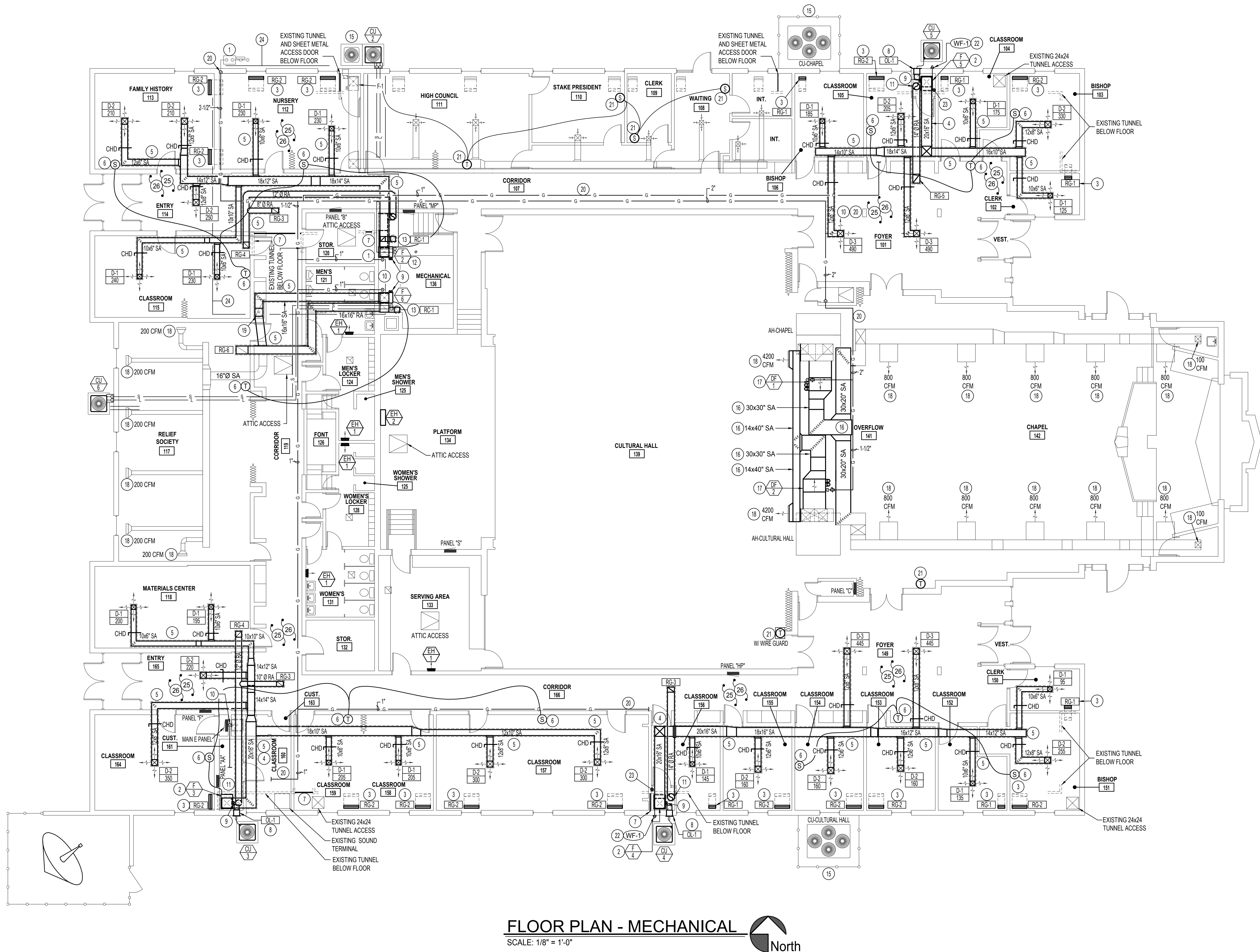


\\esa.local\F-Drive\2121041 LDS Soda Springs\21041 LDS Soda Springs.dwg Feb 28, 2023 - 8:03am



FLOOR PLAN - MECHANICAL

SCALE: 1/8" = 1'-0"



PLAN NOTES:

- COORDINATE WITH LOCAL GAS COMPANY TO HAVE GAS METER TO DELIVER 1,128 kBtu/hr AT 1/2 PSI OPERATING PRESSURE. ENLARGE EXISTING PENETRATION FOR EXISTING GAS LINE FOR NEW 2-1/2" LINE. SEAL WEATHER TIGHT.
- INSTALL NEW FURNACE AS INDICATED ON PLANS AND DETAIL. AN2.1 CUT OPENING THRU EXISTING CONCRETE FLOOR FOR RETURN AIR. OPENING IN FLOOR TO MATCH FURNACE OPENING. CUT CONCRETE FLOOR FOR NEW 10x10" OUTSIDE AIR DUCT WITH MOTORIZED DAMPER.
- CUT EXISTING CONCRETE FLOOR TO INSTALL NEW FLOOR GRILLE AND RETURN BOOT. REFER TO DETAIL CM1.2 FOR TYPICAL INSTALLATION. BOOT TO BE SAME SIZE AS FLOOR GRILLE.
- RUN SUPPLY AND/OR RETURN AIR DUCT IN NEW FURR-OUT TO CORRIDOR WALL. RISE UP AS SOON AS POSSIBLE INTO ATTIC SPACE AND RUN ABOVE CEILING AS SHOWN. FIELD VERIFY EXISTING CONDITIONS AND ROUTE DUCTS AS REQUIRED TO AVOID ROOF TRUSSES. SEE DETAIL RM2.2.
- ALL DUCTWORK IN COLD ATTIC SPACE TO BE WRAPPED WITH 1-1/2" THICK EXTERNAL DUCT WRAP.
- INSTALL NEW THERMOSTAT AND SENSOR ON WALL WITH WOOD SUB BASE. REFER TO DETAILS EM2.1 AND MM2.2 FOR TYPICAL SENSOR/THERMOSTAT INSTALLATION.
- PROVIDE SHEET METAL ACCESS DOOR IN EXISTING TUNNEL BELOW FLOOR. FIELD VERIFY EXISTING CONDITIONS AND MAKE ACCESS DOOR AS LARGE AS POSSIBLE. PROVIDE WEATHER STRIPPING TO SEAL AS AIR TIGHT AS POSSIBLE.
- INSTALL 12x12" LOUVER IN EXTERIOR WALL AS HIGH AS POSSIBLE. DROP 10x10" OUTSIDE AIR DUCT DOWN THRU FLOOR AND EXTEND INTO PIPE TUNNEL. PROVIDE AND INSTALL MOTORIZED DAMPER, 6x6" ACCESS DOOR AND MANUAL BALANCING DAMPER IN DUCT. BALANCE TO CFM AS INDICATED ON SCHEDULES. SEE DETAIL ANM2.1.
- EXTEND (2) 2" FURNACE VENTS THRU ROOF WITH CONCENTRIC TERMINATION KIT. REFER TO DETAIL BM2.1 FOR TYPICAL VENT INSTALLATION. COORDINATE VENT LOCATION WITH OUTSIDE AIR LOUVER AND DUCT. KEEP VENT AS FAR AS POSSIBLE FROM LOUVER.
- ROUTE 3/4" CONDENSATE DRAIN LINE FROM NEW FURNACE IN NEW FUR-OUT TO NEARBY JANITOR SINK. SEE DETAIL NM2.2.
- DROP RA DUCT DOWN THRU NEW MECHANICAL ROOM INTO EXISTING TUNNELS BELOW FLOOR. COORDINATE WITH GENERAL CONTRACTOR FOR CUTTING OF EXISTING CONCRETE FLOOR. SEAL NEW PENETRATIONS AIR TIGHT.
- RETURN AIR TO BE DUCTED TO TUNNEL ENTRANCE AND SEALED AIR TIGHT.
- NEW 10x10" OUTSIDE AIR DUCT TO NEW ROOF CAP. PROVIDE AND INSTALL MOTORIZED DAMPER, 6x6" ACCESS DOOR AND MANUAL BALANCING DAMPER IN OUTSIDE AIR DUCT. BALANCE TO CFM AS INDICATED ON PLANS.
- EXISTING MECHANICAL EQUIPMENT TO REMAIN. PROTECT DURING CONSTRUCTION.
- EXISTING CONDENSING UNITS TO REMAIN. PROTECT DURING CONSTRUCTION.
- FIELD VERIFY EXISTING CONDITIONS DURING PRE-BID MEETING FOR NEW DUCT ROUTES. CONTRACTOR RESPONSIBLE TO RE-ROUTE/RELOCATE EXISTING CONDITIONS OR MODIFY DUCTWORK TO FULFILL DESIGN INTENT.
- SEE DETAIL IM2.1 FOR TYPICAL UNIT AND FLUES INSTALLATION. FLUES TO BE WITHIN 3' OF ROOF PEAK. INSTALL AS HIGH AS POSSIBLE AND AS PER MANUFACTURER RECOMMENDED CLEARANCES. MODIFY DUCT ROUTES AS REQUIRED. INTERLOCK WITH OPERATION OF AIR HANDLERS AND NEW LCBS CONTROLS.
- BALANCE EXISTING DIFFUSER TO CFM AS INDICATED ON PLANS.
- ROUTE SUPPLY AIR DUCTWORK THROUGH THIS EXISTING FUR-OUT. DEMO, TAPE, TEXTURE AND PAINT EXISTING WALL AND CEILING AS REQUIRED FOR NEW INSTALL.
- EXISTING 2" GAS LINE THRU SLAB TO REMAIN. IMMEDIATELY INCREASE TO 2-1/2" AND RISE TO ATTIC SPACE. ROUTE NEW GAS LINES IN ATTIC SPACE AS MUCH AS POSSIBLE. DEMO WALLS AND CEILING AS REQUIRED FOR NEW ROUTES. TAPE, TEXTURE, AND PAINT TO MATCH EXISTING CONDITIONS AFTER WORK IS COMPLETE SEE DETAILS JM2.1 AND LM2.2.
- INSTALL NEW LCBS THERMOSTAT OR SENSOR WITH WOOD SUB BASE. REFER TO DETAILS EM2.1 AND MM2.2 FOR TYPICAL SENSOR/THERMOSTAT INSTALLATION. IF APPLICABLE, INTERLOCK WITH EXISTING HVAC SYSTEM.
- 3/4" CONDENSATE DRAIN LINE TO WALL FLANGE CONNECTION. SEE DETAIL OM2.2.
- CONTRACTOR RESPONSIBLE FOR NEW MECH ROOM CONSTRUCTION. SEE DETAIL RM2.2. SEE ROOM FINISH SCHEDULE ON SHEET M2.2.
- SEE THIS SHEET FOR ADDITIONAL STEAM TUNNEL INFORMATION.
- IT IS ASSUMED ALL CORRIDOR BRICK WALLS GO TO ROOF STRUCTURE. CONTRACTOR NEEDS TO PROVIDE AND INSTALL LINTEL TO ACCOMMODATE NEW DUCTWORK. EXTEND LINTEL APPROXIMATELY 4" ON EACH SIDE OF NEW PENETRATION.
- CONTRACTOR TO SELECT QTY (6) LOCATION FOR NEW 24x24 ATTIC ACCESSSES THAT MATCH THE BUILDING EXISTING TYPE. DEMO, TAPE TEXTURE, AND PAINT AS REQUIRED FOR NEW ACCESS AND NEW DUCTWORK. ACCESS DOORS TO BE EQUAL TO BEST ACCESS DOORS MODEL BA-MDS.



Engineered Systems Associates
Mechanical Engineers

Dwayne Sudweeks P.E., Dave Hansen P.E., Tanner Davis P.E.
1355 East Center - Pocatello, Idaho 83201
Phone: (208) 233-0501 email: esa@engsystems.com

PROJECT: HVAC RENOVATIONS FOR: LDS SODA SPRINGS 2, 6 & STAKE

PROPERTY # 501-3917
290 S. 3RD W., SODA SPRINGS, IDAHO 83276

MECHANICAL FLOOR PLAN

SHEET TITLE:



DRWN. BY:	CKD. BY:
TD	DCS
JOB NO.	DATE:
21041	3/28/2022

SHEET:
M1.2
OF: 7